

Tutorial

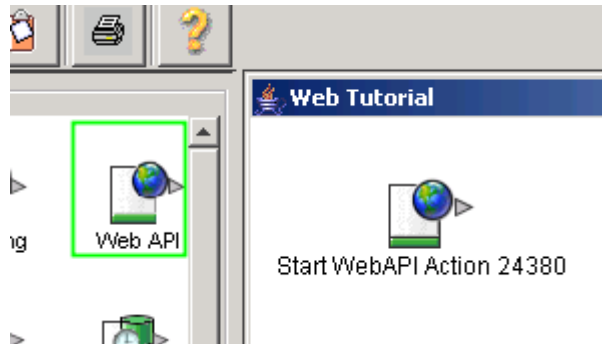
Interfacing to a Web Page

HighOrbit BPM can be used to capture information from a corporate web page and initiate a process that includes data from a standard HTML form. This tutorial shows a few simple steps to map your web page to a HighOrbit workflow.

Step 1

Create a workflow and define data

Using the Workflow Designer, create a simple workflow and use the Web API Action icon.



Your icon will be assigned a number. Please make a note of this number for later. In this example, the number will be "24380".

Next, create a set of appropriate data elements for your process. We'll create a few examples as shown below:



Step 2 Create and/or modify your web page

Next, create your web page / HTML form. A little knowledge in HTML will be helpful. Programs such as Microsoft FrontPage and Macromedia Dreamweaver can also simplify matters.

To map fields from your HTML form to your workflow, make sure the names of the fields match the names of the data elements in your process.

Your HTML form source should look similar to the ones below for this example:

```
<input name="first_name" type="text">
<input name="last_name" type="text">
<input name="email_address" type="text">
<input name="job_title" type="text">
<input name="phone_number" type="text">
<textarea name="comments"> </textarea>
```

In addition, your form action HTML should look like:

```
<form action="http://stellar.hihorbit.com/HighOrbitWeb/servlet/com.hihorbit.Servlets.TDWeb">
```

Finally, add the following hidden fields before the closing </form> tag.

```
<input type="hidden" name="port" value="6051">
<input type="hidden" name="redirectError" value="http://www.hihorbit.com/error.jsp">

<input type="hidden" name="redirectGood" value="http://www.hihorbit.com/good.jsp">
<input type="hidden" name="server" value="stellar.hihorbit.com">
<!-- CHANGE THIS NUMBER BELOW TO MATCH THE STARTING ACTION IN YOUR WORKFLOW -->
<input type="hidden" name="aid" value="24380">
```

The number “24380” that we noted earlier is used in the last hidden field to map this form to our particular process.

You may also want to change the redirectGood and redirectError values to your own pages. These values specify the pages that will be displayed after the user submits the form.

Step 3 Complete your workflow, test, and deploy

At this time, you can complete your workflow. A new instance of the process will initiate when a user submits the form from your web page. The process data elements will be populated with information from the HTML form as long as the names match. You can add additional data elements that are internal to the workflow without any ill effects.

Your workflow must be “Deployed” to the production server for the Web API to work correctly.